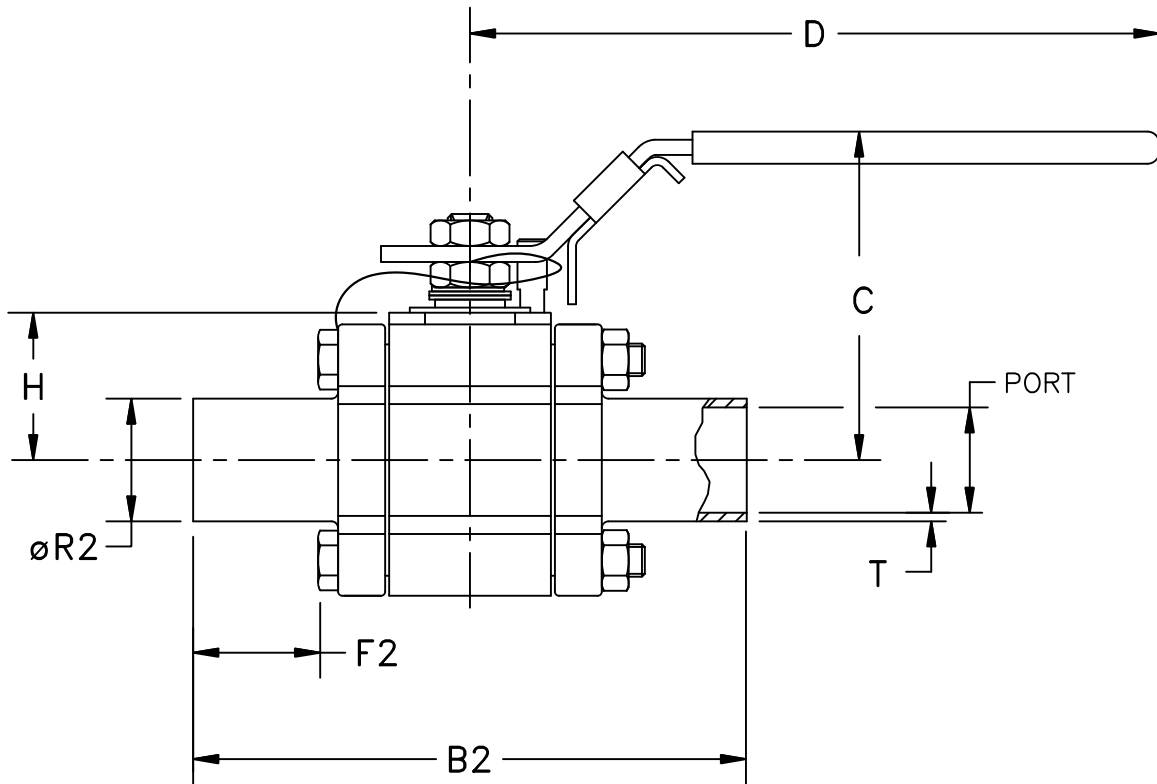


VALVE SIZE	DIMENSIONS, MM							
	PORT MM	B2 MM	C MM	D MM	F2 MM	H MM	ØR2 MM	T MM
DN15	18.10	126.0	70	133	36	30.8	21.30	1.60
DN20	23.70	137.4	76	133	35	35.3	26.90	1.60
DN25	29.70	149.7	85	172	35	39.0	33.70	2.00
DN40	44.30	169.2	101	204	34	51.3	48.30	2.00



TOLERANCES

BWE, FE, TRI-C & TUBE END F-F DIM ARE ±1.57mm

ALL OTHER DIMENSIONS: ±12.7mm

SPECIFICATION DATA	
CUSTOMER _____	
ORDER No. _____ SERIAL No. _____	
TAG No. _____	
VALVE TYPE _____ QTY. _____	
BODY _____	
END CONN. _____	
INLET PRESS. _____ MAX. ΔP _____	
PRESS. RANGE _____ SET AT _____	
VALVE ACTION: RISE IN PRESSURE TO	<input type="checkbox"/> OPEN
	<input type="checkbox"/> CLOSE
VALVE SEAT _____ Cv _____	
MISC. _____	
CERTIFIED _____ DATE _____	

STERIFLOW
a division of Jordan Valve
CINCINNATI, OHIO U.S.A.
www.steriflowvalve.com

DN15-DN40 9020S-LF (ISO)

2-WAY SANITARY BALL VALVE W/TUBE ENDS

DRAWN BY	DATE
DW	12/03/15
CHECKED BY	DATE
KEVIN CARTER	

MK9020S_DN15-40

METRIC