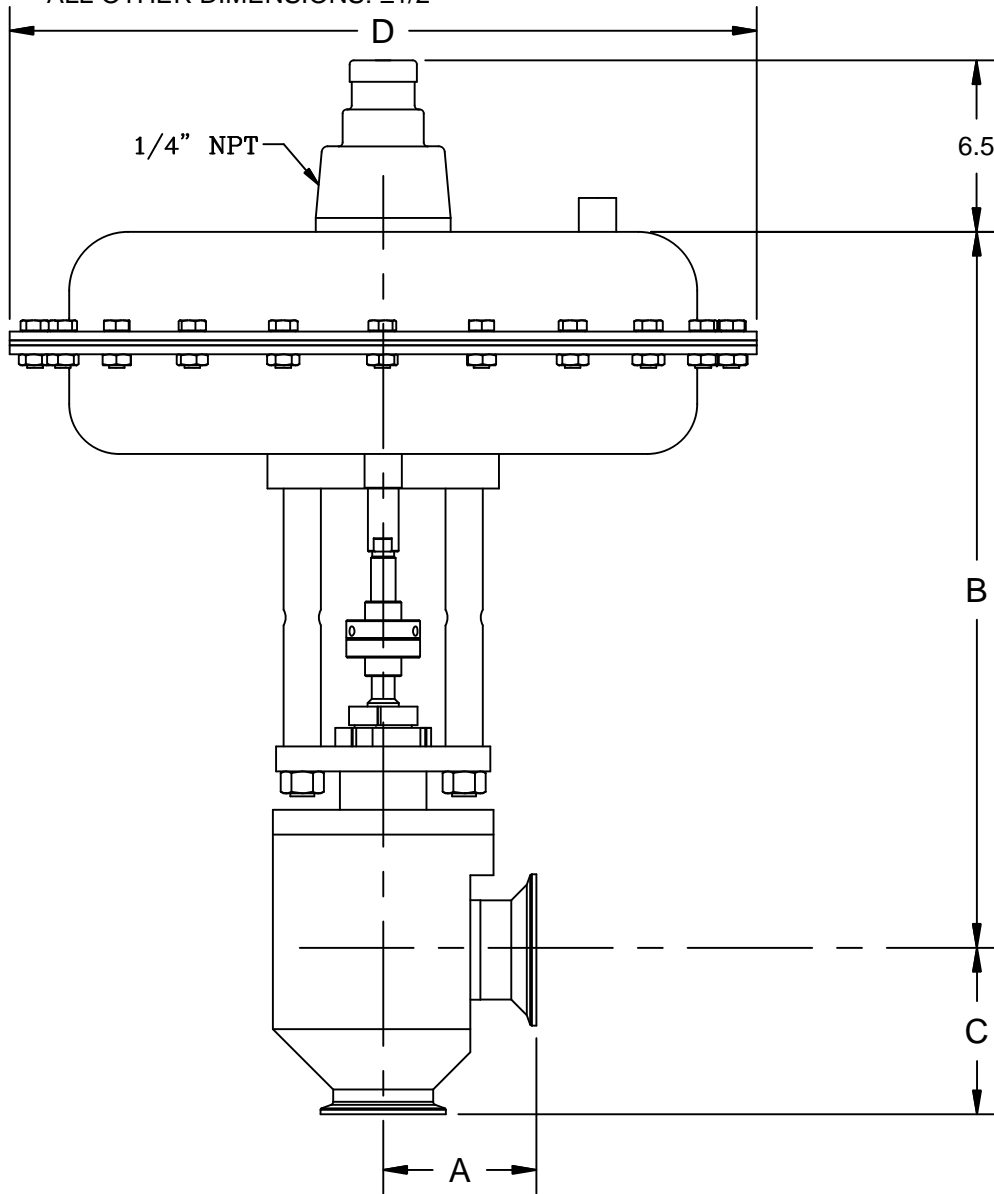


TOLERANCES

BWE, FE, TRI-C & TUBE END F-F DIM ARE $\pm 1/16"$

ALL OTHER DIMENSIONS: $\pm 1/2"$



VALVE SIZE	DIMENSIONS				Wt. lbs.
	A	B	C	D	
1/2"	2.08	11.37	1.91	9.50(35M)	31(35M)
				12.50(55M)	46(55M)
3/4"	2.08	11.37	1.91	9.50(35M)	31(35M)
				12.50(55M)	46(55M)
1"	2.08	11.37	1.91	9.50(35M)	31(35M)
				12.50(55M)	46(55M)
1 1/2"	3.08	14.43	3.30	12.50(55M)	51(55M)
				15.00(85M)	61(85M)
2"	3.08	14.43	3.30	12.50(55M)	51(55M)
				15.00(85M)	61(85M)

SPECIFICATION DATA	
CUSTOMER _____	
ORDER No. _____ SERIAL No. _____	
TAG No. _____	
VALVE TYPE _____ QTY. _____	
BODY _____	
END CONN. _____	
INLET PRESS. _____ MAX. Δ P _____	
CONTROL RANGE _____	
VALVE ACTION: RISE IN SIGNAL TO <input type="checkbox"/> OPEN	
<input type="checkbox"/> CLOSE	
VALVE SEAT _____ Cv _____	
MISC. _____	
CERTIFIED _____ DATE _____	

STERIFLOW
 a division of Jordan Valve
 CINCINNATI, OHIO U.S.A
 www.steriflowvalve.com

1/2" - 2" MK978 SANITARY CONTROL VALVE
 35M/55M/85M ACTUATOR
 SST W/TRI-CLAMP ENDS, TMP

DRAWN BY	DATE
JLW	7/13/06
CHECKED BY	DATE

MK978TP